

The Safeguarding Team



Catherine Hoskin
Designated Safeguarding Lead
Deputy Headteacher



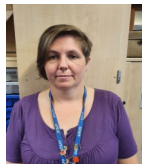
Adam Palmer
Deputy Designated Safeguarding
Lead
Headteacher



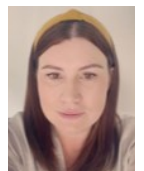
Claire O'Sullivan
Deputy Designated Safeguarding
Lead
Family Support Worker



Jo Atkins
Deputy Designated Safeguarding
Lead
Special Educational Needs
Co-ordinator



Kim Fraser
Deputy Designated Safeguarding
Lead
Assistant Headteacher



Lauren Parkes
Deputy Designated Safeguarding
Lead
Assistant Headteacher

Safeguarding Governor: Rita Wiseman

Lanyards

All adults in the school are expected to wear a lanyard at all times. The following pictures show the lanyards that you may see. If anyone is not wearing a lanyard they will be challenged.



In addition, you may see adults around school that work for our academy trust, Inspiring Futures Through Learning. They will be wearing their Trust lanyards which look like this.



For further safeguarding information and to see our policies please see the school website:
<https://www.smsg.uk.com/safeguarding/>

Safeguarding Leaflet for Visitors

September 2023

Every Child is a Gift From God
Psalm 127:3

Safeguarding Information for Visitors



Safeguarding is
everyone's
responsibility.

Safeguarding at St Mary and St Giles School.

Everybody at St Mary and St Giles has a duty to keep children safe. Staff, parents and visitors can help to do this by providing and contributing to a safe environment, identifying children who are suffering or likely to suffer significant harm and by taking appropriate action.

This information leaflet has been given to you to make sure you understand what is expected.

Visitors are asked to sign in when they arrive and will be given a lanyard and badge to wear at all times. This should be returned to reception when they sign out and end their visit.

It is our policy to accompany all visitors whilst they are on site, except those who have DBS clearance.

Schools and staff must promote the welfare and safety of pupils when carrying out their duties by having regard to the DfE statutory document Keeping Children Safe in Education (2022) and the Education Act 2002 (section 175(2)).

St Mary and St Giles have Safeguarding and Child Protection policies and this leaflet is used in conjunction with them. They are available on request or accessible on the school website.

All visitors play an important part in the life of our school.

Visitors have the same duty of care that all staff have whilst on our site.

Safeguarding is the responsibility of everyone.

If a visitor becomes aware of any situation regarding the safeguarding of a child they must inform a member of the safeguarding team at the first opportunity. Under no circumstances should a visitor leave the school site before reporting their concern.

You should be concerned about any information which suggests a child is:

- being neglected
- experiencing harm—physical, emotional or sexual
- At risk of FGM, radicalisation, extremism or child exploitation

You must raise your concern with one of the Designated Safeguarding Leads listed in this leaflet.

You may:

- Observe physical signs
- Notice changes in a child's behaviour or presentation
- Pick up signs of emotional distress
- Have a child disclose a harmful experience to you

What should I do if a child chooses to disclose that they are being harmed?

- Listen carefully to what is being said to you—do not interrupt
- Reassure the child that it isn't their fault
- Stress that it is the right thing to tell
- Be calm, attentive and non-judgmental.

DO NOT

- Promise to keep what is said a secret
- Ask leading questions as it can prejudice further investigations

Only if necessary ask non-leading questions to clarify information (T.E.D)

Tell me more

Explain that to me

Describe what happened

Allow the child to say what they need to say; do not stop them. The information you have may not be enough on its own for a Child Protection referral to the MASH (Multi Agency Safeguarding Hub) however, it will help your Designated Safeguarding Lead (DSL) to decide about the risk of harm to the child and how to move forward to protect and support.

Whistleblowing

If you are concerned about the school's safeguarding practices then you can contact the Chair of Governors, Daniel Mullins by email dmullins@smsg.uk.com or the IFTL Safeguarding Lead Victoria Blackmore on 07909 257778.